



# Iowa Ag News – Cattle on Feed

Upper Midwest Region - Iowa Field Office · 210 Walnut Street Ste 833 · Des Moines IA 50309 · (515) 284-4340 · (800) 772-0825  
fax (855) 271-9802 · www.nass.usda.gov

Cooperating with the Iowa Department of Agriculture and Land Stewardship

August 22, 2014

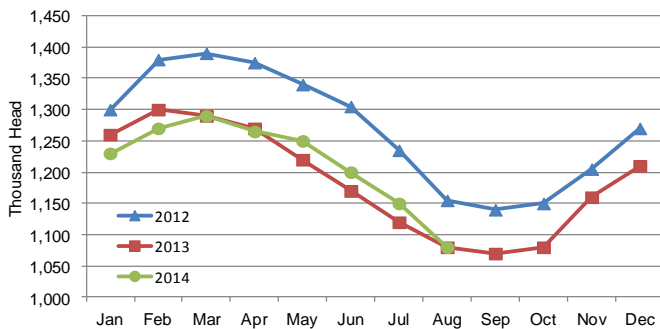
Media Contact: Greg Thessen

**Cattle and calves on feed** for slaughter market in Iowa for all feedlots totaled 1,080,000 on August 1, 2014, according to the USDA, National Agricultural Statistics Service, Iowa Field Office. The inventory is down 6 percent from July 1, 2014, but unchanged from August 1, 2013. Feedlots with a capacity greater than 1,000 head had 600,000 head on feed, down 3 percent from last month but up 7 percent from last year. Feedlots with a capacity less than 1,000 head had 480,000 head on feed, down 9 percent from last month and down 8 percent from last year.

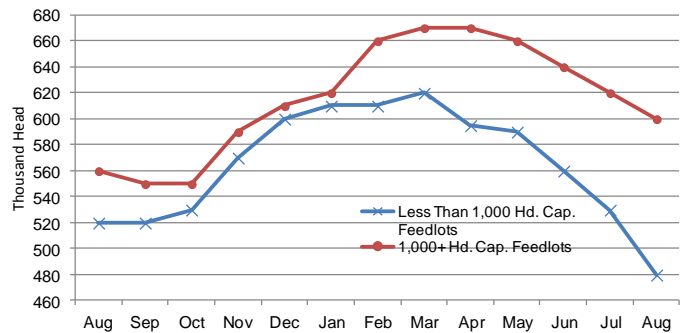
**Placements** during July totaled 95,000 head, an increase of 1 percent from last month but down 9 percent from last year. Feedlots with a capacity greater than 1,000 head placed 56,000 head, up 4 percent from last month and up 17 percent from last year. Feedlots with a capacity less than 1,000 head placed 39,000 head. This is down 2 percent from last month and down 30 percent from last year.

**Marketings** for July were 160,000 head, up 16 percent from last month and up 17 percent from last year. Feedlots with a capacity greater than 1,000 head marketed 74,000 head, up 6 percent from last month and up 16 percent from last year. Feedlots with a capacity less than 1,000 head marketed 86,000 head, up 26 percent from last month and up 18 percent from last year. **Other disappearance** totaled 5,000 head.

Cattle on Feed, Inventory on all Feedlots, Iowa: 2012-2014



Cattle on Feed, Inventory by Feedlot Capacity, Iowa: Current Month & Past 12 Months



## All Cattle on Feed, Iowa

Item	Lots 1,000+ Head	Lots Less than 1,000 Head	All Lots
	(1,000 head)	(1,000 head)	(1,000 head)
Cattle on Feed, July 1, 2014 .....	620	530	1,150
July Placements .....	56	39	95
July Marketings .....	74	86	160
July Other Disappearance .....	2	3	5
Cattle on Feed, August 1, 2014 .....	600	480	1,080

## Cattle on Feed: Number on Feed, Placements, Marketings, and Other Disappearance by Month, 1,000+ Capacity Feedlots

[Cattle and calves on feed are animals for slaughter market being fed a ration of grain or other concentrates and are expected to produce a carcass that will grade select or better.]

State	Cattle on Feed August 1			Placements during July			Marketings during July			July Disappearance other than Slaughter <sup>1</sup>		
	2013	2014	'14 as % of '13	2013	2014	'14 as % of '13	2013	2014	'14 as % of '13	2013	2014	'14 as % of '13
	(1,000 head)	(1,000 head)	(percent)	(1,000 head)	(1,000 head)	(percent)	(1,000 head)	(1,000 head)	(percent)	(1,000 head)	(1,000 head)	(percent)
Arizona .....	262	262	100	23	23	100	27	26	96	1	7	700
California .....	515	420	82	57	39	68	55	47	85	2	7	350
Colorado .....	870	810	93	120	90	75	165	145	88	5	5	100
Idaho .....	185	185	100	39	37	95	48	41	85	1	1	100
<b>Iowa .....</b>	<b>560</b>	<b>600</b>	<b>107</b>	<b>48</b>	<b>56</b>	<b>117</b>	<b>64</b>	<b>74</b>	<b>116</b>	<b>4</b>	<b>2</b>	<b>50</b>
Kansas .....	2,000	1,900	95	425	400	94	430	390	91	15	10	67
Minnesota .....	109	116	106	9	10	111	24	15	63	1	1	100
Nebraska .....	2,080	2,160	104	370	375	101	450	465	103	20	10	50
Oklahoma .....	285	240	84	45	32	71	64	46	72	1	1	100
South Dakota ..	180	190	106	19	20	105	37	39	105	2	1	50
Texas .....	2,490	2,470	99	450	410	91	510	415	81	10	15	150
Washington .....	189	189	100	41	37	90	54	40	74	1	1	100
Other States ....	300	295	98	38	31	82	42	44	105	1	2	200
United States ...	10,025	9,837	98	1,684	1,560	93	1,970	1,787	91	64	63	98

<sup>1</sup>Includes death loss, movement from feedlots to pasture, and shipments to other feedlots for further feeding.

### United States Cattle on Feed

Cattle and calves on feed for slaughter market in the United States for feedlots with capacity of 1,000 or more head totaled 9.8 million head on August 1, 2014. The inventory was 2 percent below August 1, 2013.

Placements in feedlots during July totaled 1.56 million, 7 percent below 2013. Net placements were 1.50 million head. During July, placements of cattle and calves weighing less than 600 pounds were 425,000, 600-699 pounds were 260,000, 700-799 pounds were 355,000, and 800 pounds and greater were 520,000. For the month of July placements are the lowest since the series began in 1996.

Marketings of fed cattle during July totaled 1.79 million, 9 percent below 2013. July marketings are the lowest since the series began in 1996.

Other disappearance totaled 63,000 during July, 2 percent below 2013.